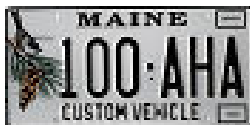


# **Memorandum**

## **Bureau of Motor Vehicles Dealer and Agent Services**

To: Municipal Agents and Tax Collectors  
From: Susan Harris-Pomerleau, Section Manager, Dealer and Agent Services  
CC: Catherine Curtis, Director, Vehicle Services  
Subject: Custom Vehicle Plates  
Date: May 19, 2006

---



Effective July 1, 2006, a new law authorizes the Bureau of Motor Vehicles to issue Custom Vehicles plates. “**Custom Vehicle**” means a motor vehicle that is at least 30 years old and of a model year after 1948 or a motor vehicle that was manufactured to resemble a motor vehicle that is at least 30 years old and of a model year after 1948 and that has been altered from the manufacturer’s original design or has a body constructed from non-original material. The plates will be issued by the main office, each branch office, and by municipal agents who process new registrations and issue new plates. Each of these offices will receive plates on or about June 15, but the plates can not be issued until July 1, 2006. Low digit plates are not available and requests to reserve a number will not be accepted.

Motor vehicles that meet the above definition can be registered as Custom Vehicles. Any vehicle registered as a Custom Vehicle will be issued a registration certificate and a set of custom vehicle registration plates in a unique numbering sequence as follows: starting with plate number 101-AHA through 999-AHA; continuing on with 101-AHB through 999-AHB; and so on. Custom Vehicle plates cannot be issued to motorcycles or to motor vehicles that exceed 6,000 pounds rww. The registrant must garage or maintain the vehicle in the State of Maine. Excise tax must be paid to the town where the owner resides.

The registration fee for a Custom Vehicle is \$25.00 and no additional specialty plate fee is required. The class code is **CV**. The registration must indicate the year, make & model that the body of the custom vehicle resembles. The words, **MODIFIED VEHICLE**, will be printed on each registration issued. For each new registration, the attached affidavit for Antique Auto, Custom Vehicle, Horseless Carriage, or Street Rod Registration (Form MV-65) must be completed by the applicant. If the new applicant has a copy of the prior owner’s original affidavit, this copy should be submitted as well as a new affidavit in the applicant’s name. Revised affidavits (Form MV-65) are available through the Main Office Stockroom.

## Page 2

Vanity Custom Vehicle plates are available for the annual fee of \$15.00 and can be issued with a sequence of seven maximum characters, plus one space or dash. Vanity plates issued in this class code cannot duplicate a vanity plate issued in any other class code. However, a registrant can turn in a current vanity plate, in another class code, for a Custom Vehicle vanity plate, **only** if that vanity plate sequence is not taken in any other class code. Use Application for Initial Plates (MV-45) when applying for a Custom Vehicle initial plate. (Refer to **“INITIAL/VANITY PLATES”** section of the manual for further information). Revised vanity plate applications are available through the Main Office Stockroom.

Example: Ms. Jones is requesting the Custom Vehicle vanity plate JONESY and decided to turn in and replace her current Lobster Plate JONESY. However, a search of the vanity plate records shows that JONESY is also being used as a motorcycle and passenger car plate. Therefore, we cannot issue Ms. Jones the Custom Vehicle vanity plate JONESY.

Once the vehicle has been registered as a Custom Vehicle, it must remain registered as a Custom Vehicle unless approved by the Director of Vehicle Services.

If a registrant would like to request a different type of plate, the request must be submitted in writing to the Director of Vehicle Services. The written request must explain why a different plate is desired and it must contain information about the make, model, and year of the chassis. If the request is approved, a corrected registration will be issued; however, the make, model, and year will reflect the information pertaining to the chassis.

If the Custom Vehicle has a public VIN, there is no need to apply for a Maine Assigned VIN. If the vehicle does not have a public VIN the registrant must apply for a Maine Assigned VIN using an MVT-6 form. If component parts used to modify the vehicle came from a titled vehicle, the applicant must list the VIN and name of each component part on the reverse of the MVT-6 form and submit a copy of the bill of sale for each part listed. There is a \$23.00 fee for an assigned VIN. Once the VIN has been assigned by an Investigator, the registration can then be completed using the Maine Assigned VIN attached to the vehicle.

When reporting the CV plate on the cash report, manual towns will include these vehicles in the passenger category on the cash report. The electronic vendors have received the specs and the electronic registration towns will also be able to process CV registrations on July 1, 2006.

The procedure manual pages will be forth coming in the next few weeks.

If you have any questions or concerns, please feel free to contact this office at 1-800-452-1937.

SHP/mlw